

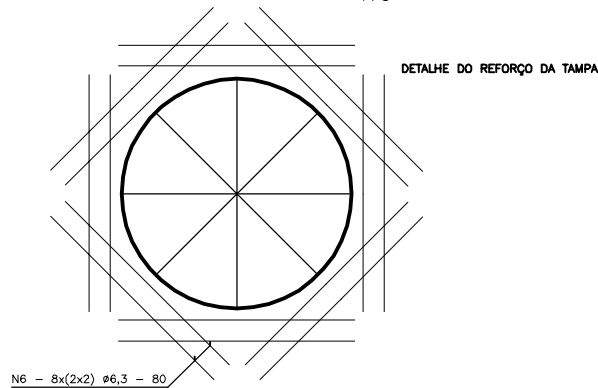
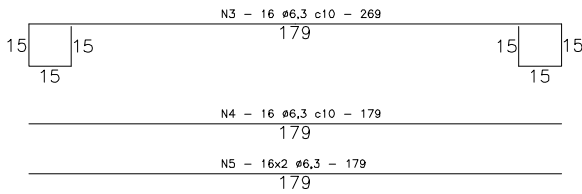
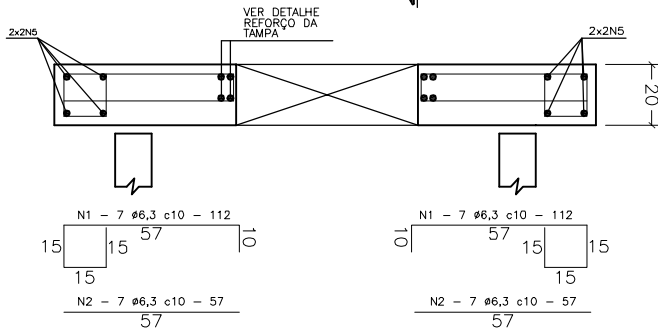
Technical drawing of a circular structure, likely a tank or container, showing a plan view and a detail view.

**Plan View Dimensions:**

- Overall width: 154
- Overall height: 144
- Grid spacing: 10 units (10x10 grid)
- Circle diameter: 60
- Section line A-A is indicated.

**Detail View Dimensions:**

- Detail view shows a corner of the structure.
- Dimensions: 2x2N5, 2x2N6, 2x2N7, 2x2N8, 2x2N9, 2x2N10, 2x2N11, 2x2N12, 2x2N13, 2x2N14, 2x2N15, 2x2N16, 2x2N17, 2x2N18, 2x2N19, 2x2N20, 2x2N21, 2x2N22, 2x2N23, 2x2N24, 2x2N25, 2x2N26, 2x2N27, 2x2N28, 2x2N29, 2x2N30, 2x2N31, 2x2N32, 2x2N33, 2x2N34, 2x2N35, 2x2N36, 2x2N37, 2x2N38, 2x2N39, 2x2N40, 2x2N41, 2x2N42, 2x2N43, 2x2N44, 2x2N45, 2x2N46, 2x2N47, 2x2N48, 2x2N49, 2x2N50, 2x2N51, 2x2N52, 2x2N53, 2x2N54, 2x2N55, 2x2N56, 2x2N57, 2x2N58, 2x2N59, 2x2N60, 2x2N61, 2x2N62, 2x2N63, 2x2N64, 2x2N65, 2x2N66, 2x2N67, 2x2N68, 2x2N69, 2x2N70, 2x2N71, 2x2N72, 2x2N73, 2x2N74, 2x2N75, 2x2N76, 2x2N77, 2x2N78, 2x2N79, 2x2N80, 2x2N81, 2x2N82, 2x2N83, 2x2N84, 2x2N85, 2x2N86, 2x2N87, 2x2N88, 2x2N89, 2x2N90, 2x2N91, 2x2N92, 2x2N93, 2x2N94, 2x2N95, 2x2N96, 2x2N97, 2x2N98, 2x2N99, 2x2N100, 2x2N101, 2x2N102, 2x2N103, 2x2N104, 2x2N105, 2x2N106, 2x2N107, 2x2N108, 2x2N109, 2x2N110, 2x2N111, 2x2N112, 2x2N113, 2x2N114, 2x2N115, 2x2N116, 2x2N117, 2x2N118, 2x2N119, 2x2N120, 2x2N121, 2x2N122, 2x2N123, 2x2N124, 2x2N125, 2x2N126, 2x2N127, 2x2N128, 2x2N129, 2x2N130, 2x2N131, 2x2N132, 2x2N133, 2x2N134, 2x2N135, 2x2N136, 2x2N137, 2x2N138, 2x2N139, 2x2N140, 2x2N141, 2x2N142, 2x2N143, 2x2N144, 2x2N145, 2x2N146, 2x2N147, 2x2N148, 2x2N149, 2x2N150, 2x2N151, 2x2N152, 2x2N153, 2x2N154, 2x2N155, 2x2N156, 2x2N157, 2x2N158, 2x2N159, 2x2N160, 2x2N161, 2x2N162, 2x2N163, 2x2N164, 2x2N165, 2x2N166, 2x2N167, 2x2N168, 2x2N169, 2x2N170, 2x2N171, 2x2N172, 2x2N173, 2x2N174, 2x2N175, 2x2N176, 2x2N177, 2x2N178, 2x2N179, 2x2N180, 2x2N181, 2x2N182, 2x2N183, 2x2N184, 2x2N185, 2x2N186, 2x2N187, 2x2N188, 2x2N189, 2x2N190, 2x2N191, 2x2N192, 2x2N193, 2x2N194, 2x2N195, 2x2N196, 2x2N197, 2x2N198, 2x2N199, 2x2N200, 2x2N201, 2x2N202, 2x2N203, 2x2N204, 2x2N205, 2x2N206, 2x2N207, 2x2N208, 2x2N209, 2x2N210, 2x2N211, 2x2N212, 2x2N213, 2x2N214, 2x2N215, 2x2N216, 2x2N217, 2x2N218, 2x2N219, 2x2N220, 2x2N221, 2x2N222, 2x2N223, 2x2N224, 2x2N225, 2x2N226, 2x2N227, 2x2N228, 2x2N229, 2x2N230, 2x2N231, 2x2N232, 2x2N233, 2x2N234, 2x2N235, 2x2N236, 2x2N237, 2x2N238, 2x2N239, 2x2N240, 2x2N241, 2x2N242, 2x2N243, 2x2N244, 2x2N245, 2x2N246, 2x2N247, 2x2N248, 2x2N249, 2x2N250, 2x2N251, 2x2N252, 2x2N253, 2x2N254, 2x2N255, 2x2N256, 2x2N257, 2x2N258, 2x2N259, 2x2N260, 2x2N261, 2x2N262, 2x2N263, 2x2N264, 2x2N265, 2x2N266, 2x2N267, 2x2N268, 2x2N269, 2x2N270, 2x2N271, 2x2N272, 2x2N273, 2x2N274, 2x2N275, 2x2N276, 2x2N277, 2x2N278, 2x2N279, 2x2N280, 2x2N281, 2x2N282, 2x2N283, 2x2N284, 2x2N285, 2x2N286, 2x2N287, 2x2N288, 2x2N289, 2x2N290, 2x2N291, 2x2N292, 2x2N293, 2x2N294, 2x2N295, 2x2N296, 2x2N297, 2x2N298, 2x2N299, 2x2N300, 2x2N301, 2x2N302, 2x2N303, 2x2N304, 2x2N305, 2x2N306, 2x2N307, 2x2N308, 2x2N309, 2x2N310, 2x2N311, 2x2N312, 2x2N313, 2x2N314, 2x2N315, 2x2N316, 2x2N317, 2x2N318, 2x2N319, 2x2N320, 2x2N321, 2x2N322, 2x2N323, 2x2N324, 2x2N325, 2x2N326, 2x2N327, 2x2N328, 2x2N329, 2x2N330, 2x2N331, 2x2N332, 2x2N333, 2x2N334, 2x2N335, 2x2N336, 2x2N337, 2x2N338, 2x2N339, 2x2N340, 2x2N341, 2x2N342, 2x2N343, 2x2N344, 2x2N345, 2x2N346, 2x2N347, 2x2N348, 2x2N349, 2x2N350, 2x2N351, 2x2N352, 2x2N353, 2x2N354, 2x2N355, 2x2N356, 2x2N357, 2x2N358, 2x2N359, 2x2N360, 2x2N361, 2x2N362, 2x2N363, 2x2N364, 2x2N365, 2x2N366, 2x2N367, 2x2N368, 2x2N369, 2x2N370, 2x2N371, 2x2N372, 2x2N373, 2x2N374, 2x2N375, 2x2N376, 2x2N377, 2x2N378, 2x2N379, 2x2N380, 2x2N381, 2x2N382, 2x2N383, 2x2N384, 2x2N385, 2x2N386, 2x2N387, 2x2N388, 2x2N389, 2x2N390, 2x2N391, 2x2N392, 2x2N393, 2x2N394, 2x2N395, 2x2N396, 2x2N397, 2x2N398, 2x2N399, 2x2N400, 2x2N401, 2x2N402, 2x2N403, 2x2N404, 2x2N405, 2x2N406, 2x2N407, 2x2N408, 2x2N409, 2x2N410, 2x2N411, 2x2N412, 2x2N413, 2x2N414, 2x2N415, 2x2N416, 2x2N417, 2x2N418, 2x2N419, 2x2N420, 2x2N421, 2x2N422, 2x2N423, 2x2N424, 2x2N425, 2x2N426, 2x2N427, 2x2N428, 2x2N429, 2x2N430, 2x2N431, 2x2N432, 2x2N433, 2x2N434, 2x2N435, 2x2N436, 2x2N437, 2x2N43



RESUMO DO AÇO			
AÇO	Ø	C. TOTAL(m)	PESO kgf
CA50A	6.3	202	50
PESO TOTAL			50

Technical drawing of a circular reinforced concrete slab (Laje Circular) showing plan and elevation views.

**Plan View Dimensions:**

- Overall square dimensions: 160 cm (width) x 160 cm (height).
- Central circular opening: 60 cm diameter.
- Reinforcement spacing (horizontal): 20 cm, 60 cm, 20 cm.
- Reinforcement spacing (vertical): 20 cm, 60 cm, 20 cm.
- Reinforcement spacing (radial): 20 cm, 60 cm, 20 cm.
- Reinforcement spacing (circumferential): 20 cm, 60 cm, 20 cm.
- Reinforcement spacing (diagonal): 20 cm, 60 cm, 20 cm.

**Elevation View Dimensions:**

- Slab thickness: 20 cm.
- Reinforcement spacing (horizontal): 20 cm, 60 cm, 20 cm.
- Reinforcement spacing (vertical): 20 cm, 60 cm, 20 cm.
- Reinforcement spacing (radial): 20 cm, 60 cm, 20 cm.
- Reinforcement spacing (circumferential): 20 cm, 60 cm, 20 cm.
- Reinforcement spacing (diagonal): 20 cm, 60 cm, 20 cm.

**Detail View Dimensions:**

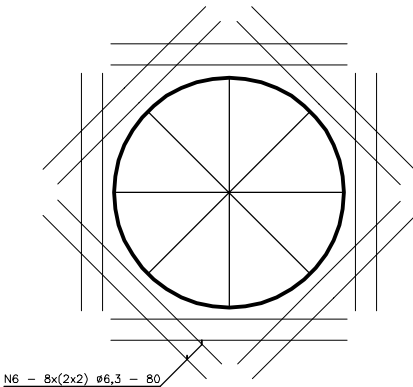
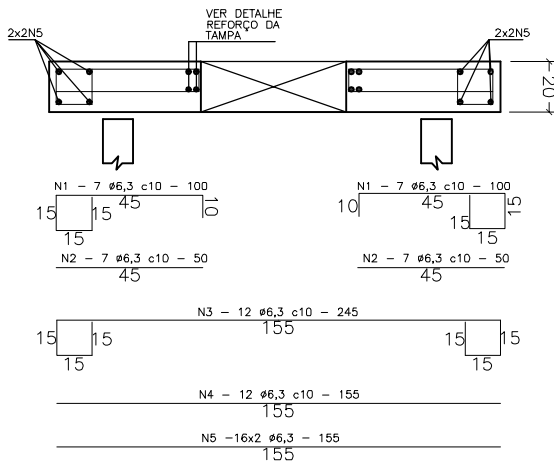
- Reinforcement spacing (horizontal): 20 cm, 60 cm, 20 cm.
- Reinforcement spacing (vertical): 20 cm, 60 cm, 20 cm.
- Reinforcement spacing (radial): 20 cm, 60 cm, 20 cm.
- Reinforcement spacing (circumferential): 20 cm, 60 cm, 20 cm.
- Reinforcement spacing (diagonal): 20 cm, 60 cm, 20 cm.

**Reinforcement Details:**

- Reinforcement type: 2x2N5.
- Reinforcement spacing: 20 cm, 60 cm, 20 cm.
- Reinforcement spacing (radial): 20 cm, 60 cm, 20 cm.
- Reinforcement spacing (circumferential): 20 cm, 60 cm, 20 cm.
- Reinforcement spacing (diagonal): 20 cm, 60 cm, 20 cm.

**Notes:**

- N1 - 7x6,3 c10 - 100
- N2 - 7x6,3 c10 - 45
- N3 - 7x6,3 c10 - 45
- N4 - 7x6,3 c10 - 45
- N5 - 7x6,3 c10 - 45
- N6 - 7x6,3 c10 - 45
- N7 - 7x6,3 c10 - 45
- N8 - 7x6,3 c10 - 45
- N9 - 7x6,3 c10 - 45
- N10 - 7x6,3 c10 - 45
- N11 - 7x6,3 c10 - 45
- N12 - 7x6,3 c10 - 45
- N13 - 7x6,3 c10 - 45
- N14 - 7x6,3 c10 - 45
- N15 - 7x6,3 c10 - 45
- N16 - 7x6,3 c10 - 45
- N17 - 7x6,3 c10 - 45
- N18 - 7x6,3 c10 - 45
- N19 - 7x6,3 c10 - 45
- N20 - 7x6,3 c10 - 45
- N21 - 7x6,3 c10 - 45
- N22 - 7x6,3 c10 - 45
- N23 - 7x6,3 c10 - 45
- N24 - 7x6,3 c10 - 45
- N25 - 7x6,3 c10 - 45
- N26 - 7x6,3 c10 - 45
- N27 - 7x6,3 c10 - 45
- N28 - 7x6,3 c10 - 45
- N29 - 7x6,3 c10 - 45
- N30 - 7x6,3 c10 - 45
- N31 - 7x6,3 c10 - 45
- N32 - 7x6,3 c10 - 45
- N33 - 7x6,3 c10 - 45
- N34 - 7x6,3 c10 - 45
- N35 - 7x6,3 c10 - 45
- N36 - 7x6,3 c10 - 45
- N37 - 7x6,3 c10 - 45
- N38 - 7x6,3 c10 - 45
- N39 - 7x6,3 c10 - 45
- N40 - 7x6,3 c10 - 45
- N41 - 7x6,3 c10 - 45
- N42 - 7x6,3 c10 - 45
- N43 - 7x6,3 c10 - 45
- N44 - 7x6,3 c10 - 45
- N45 - 7x6,3 c10 - 45
- N46 - 7x6,3 c10 - 45
- N47 - 7x6,3 c10 - 45
- N48 - 7x6,3 c10 - 45
- N49 - 7x6,3 c10 - 45
- N50 - 7x6,3 c10 - 45
- N51 - 7x6,3 c10 - 45
- N52 - 7x6,3 c10 - 45
- N53 - 7x6,3 c10 - 45
- N54 - 7x6,3 c10 - 45
- N55 - 7x6,3 c10 - 45
- N56 - 7x6,3 c10 - 45
- N57 - 7x6,3 c10 - 45
- N58 - 7x6,3 c10 - 45
- N59 - 7x6,3 c10 - 45
- N60 - 7x6,3 c10 - 45
- N61 - 7x6,3 c10 - 45
- N62 - 7x6,3 c10 - 45
- N63 - 7x6,3 c10 - 45
- N64 - 7x6,3 c10 - 45
- N65 - 7x6,3 c10 - 45
- N66 - 7x6,3 c10 - 45
- N67 - 7x6,3 c10 - 45
- N68 - 7x6,3 c10 - 45
- N69 - 7x6,3 c10 - 45
- N70 - 7x6,3 c10 - 45
- N71 - 7x6,3 c10 - 45
- N72 - 7x6,3 c10 - 45
- N73 - 7x6,3 c10 - 45
- N74 - 7x6,3 c10 - 45
- N75 - 7x6,3 c10 - 45
- N76 - 7x6,3 c10 - 45
- N77 - 7x6,3 c10 - 45
- N78 - 7x6,3 c10 - 45
- N79 - 7x6,3 c10 - 45
- N80 - 7x6,3 c10 - 45
- N81 - 7x6,3 c10 - 45
- N82 - 7x6,3 c10 - 45
- N83 - 7x6,3 c10 - 45
- N84 - 7x6,3 c10 - 45
- N85 - 7x6,3 c10 - 45
- N86 - 7x6,3 c10 - 45
- N87 - 7x6,3 c10 - 45
- N88 - 7x6,3 c10 - 45
- N89 - 7x6,3 c10 - 45
- N90 - 7x6,3 c10 - 45
- N91 - 7x6,3 c10 - 45
- N92 - 7x6,3 c10 - 45
- N93 - 7x6,3 c10 - 45
- N94 - 7x6,3 c10 - 45
- N95 - 7x6,3 c10 - 45
- N96 - 7x6,3 c10 - 45
- N97 - 7x6,3 c10 - 45
- N98 - 7x6,3 c10 - 45
- N99 - 7x6,3 c10 - 45
- N100 - 7x6,3 c10 - 45



RESUMO DO AÇO			
AÇO	Ø	C. TOTAL(m)	PESO kgf
CASOA	6.3	164	41
PESO TOTAL			41

Technical drawing of a reinforced concrete slab (LAJOTA) showing top and side views with dimensions and reinforcement details.

**Top View (Top):**

- Overall dimensions: 76 (width) x 60 (depth).
- Reinforcement: 2x2N3 (top and bottom longitudinal bars), 2x2N3 (left and right transverse bars).
- Dimensions: 20 (top and bottom margins), 18+20 (left and right margins), 38 (inner width), 60 (inner depth).
- Section lines A-A and B-B are indicated.

**Side View (Left):**

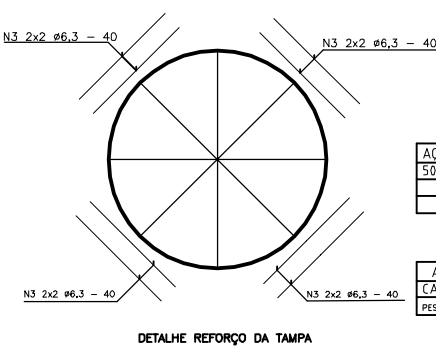
- Section A-A.
- Reinforcement: 2x2N2 (top and bottom longitudinal bars).
- Dimensions: 20 (top and bottom margins), 15 (width), 23 (height), 10 (width), 15 (height).
- Reinforcement details: N1 - 7 #6,3 c10 - 101; N2 - 2x2#6,3 - 111.

**Side View (Right):**

- Section B-B.
- Reinforcement: 2x2N2 (top and bottom longitudinal bars).
- Dimensions: 20 (top and bottom margins), 15 (width), 23 (height), 10 (width), 15 (height).
- Reinforcement details: N1 - 7 #6,3 c10 - 101; N2 - 2x2#6,3 - 111.

**Reinforcement Details:**

- N1 - 7 #6,3 c10 - 101
- N2 - 2x2#6,3 - 111



RESUMO DO AÇO			
AÇO	Ø	C. TOTAL(m)	PESO kgf
CA50A	6.3	53	13
PESO TOTAL			13

4 - PRAZO DE CURA = 21 DIAS

REVISÃO: 00

A-045-00-94-4-XX-0010

# POÇO DE VISITA - TAMPA ESTRUTURAL



## E1.2